



Whitehills Road, Loughton, IG10

BUTLER & STAG



**Guide Price £525,000-  
£550,000.**

**Positioned only a short walk  
from Loughton's prestigious  
High Street is this stunning  
two bedroom end-of-  
terraced family home.**



## Freehold

- Two Bedroom House
- Kitchen/Diner
- First Floor Shower Room
- Off-Street Parking For Two Vehicles
- End Of Terraced
- Separate Formal Living Room
- South Facing Rear Garden
- Attached Double Length Garage

Spanning across circa 800 sq. ft, the principle living accommodation throughout the ground floor comprises of a welcoming entrance hall, a formal reception room with access to a stunning kitchen/diner. A separate W/C & full double length garage completes the ground floor.

Upon the first floor lies two good sized double bedrooms & a family shower room with the master bedroom holding a range of bespoke fitted wardrobes.

Externally, the south facing rear garden is a huge draw with an initial block paved patio, offering space for al-fresco dining whilst the remainder of the garden is laid to a mature lawn with shrubs bordering the boundaries. To the front sits off-street parking for two vehicle's.

Loughton is known for its scenic views and being on the border of Epping Forest. It has excellent transport links into London from Loughton underground station, with the M11 and M25 being close by. With its highly regarded state and private schools within easy reach, its stylish, popular boutiques and abundance of eateries/bars makes it a desirable location.





## Whitehills Road, IG10

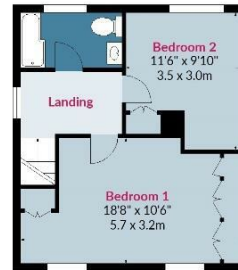
Approx. Gross Internal Area 956 Sq Ft - 88.81 Sq M

BUTLER & STAG



### Ground Floor

Floor Area 563 Sq Ft - 52.30 Sq M



### First Floor

Floor Area 393 Sq Ft - 36.51 Sq M



Measured according to RICS IPMS2. Floor plan is for illustrative purposes only and is not to scale. Every attempt has been made to ensure the accuracy of the floor plan shown, however all measurements, fixtures, fittings and data shown are an approximate interpretation for illustrative purposes only. 1 sq m = 10.76 sq feet.

Date: 26/12/2022

lpaplus.com

BUTLER & STAG

☎ 01992 667666

🏠 4 Forest Drive, Theydon Bois, Essex, CM16 7EY

✉ theydon@butlerandstag.com

IMPORTANT NOTICE - These particulars have been prepared in good faith and they are not intended to constitute part of an offer or contract. We have not performed a structural survey on this property and the services, appliances and specific fittings have not been tested. All photographs, measurements, floor plans and distances referred to are given as a guide and should not be relied upon.

www.butlerandstag.uk